

F2 D P0

POLE-OPERATED FRESNEL SPOTLIGHT WITH DAYLIGHT LED



DESCRIPTION

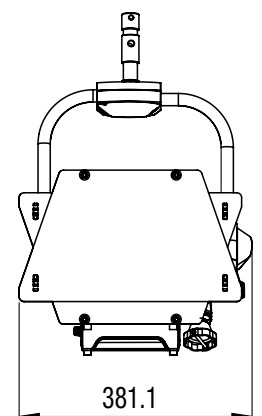
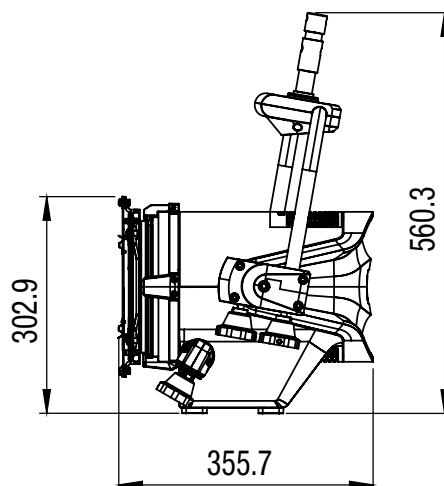
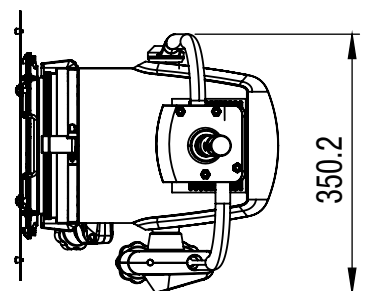
On the spot - Cameo F2 D P0 as professional Fresnel spotlight with pole operation capacity

Do you prefer your RDM-enabled spotlight to give off a soft-edged beam of light with a continuously adjustable angle of 15° to 40°? Looking for an energy-saving replacement for conventional 1 kW Fresnel models? If so, you should take a look at the Cameo F2 D P0: the professional Fresnel spotlight has a 200 mm quality lens and a high luminous flux of 15,000 lm. Its pole operability makes the Cameo F2 D P0 the perfect choice for anyone who requires precise manual adjustment from the ground and is unable or unwilling to use a ladder. The 240-watt daylight LED has a colour temperature of 5,400 K and a service life of 50,000 hours. Its extremely high colour rendering index of 96 reproduces pure and natural colours.

The F2 D P0 has 6 DMX control modes, a fast strobe function and four 16-bit dimmer curves with adjustable response. Six selectable pulse width modulation frequencies up to 25 kHz ensure flicker-free operation. High-efficiency heatpipe cooling and a temperature-controlled fan provide optimal operation. The robust, die-cast aluminium housing is equipped with a rotary encoder and OLED display for easy configuration of the spotlight. 5-pin DMX connectors and Power Twist mains sockets facilitate simple daisy-chaining. 8-way barn door, a gel frame and mains cable are included.

FEATURES

- ✓ LED Fresnel spotlight with 5,400-K daylight LED and 15,000 lm luminous flux
- ✓ Easy to operate from the floor with a pole for pan, tilt and zoom
- ✓ Perfect replacement for traditional 1-kW Fresnel spotlights
- ✓ Natural colour reproduction CRI 96, TLCI 97
- ✓ Continuous zoom for beam angles from 15° to 40°
- ✓ Four selectable 16-bit dimmer curves with adjustable response
- ✓ Optimised operation via high efficiency heatpipe cooling and temperature-controlled fan
- ✓ RDM enabled
- ✓ Selectable pulse width modulation frequencies up to 25 kHz
- ✓ Flicker-free and silent operation, ideal for TV, film and theatre
- ✓ 8-way barn door and gel frames included



Features and specifications
subject to change without notice.

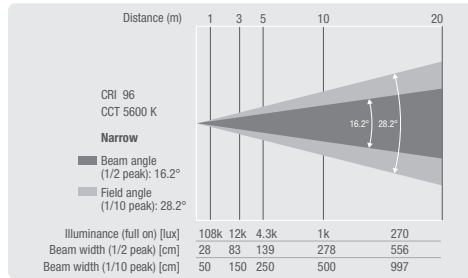
adamhall.com

F2 D P0

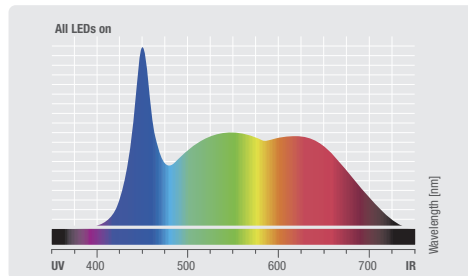
POLE-OPERATED FRESNEL SPOTLIGHT WITH DAYLIGHT LED



PHOTOMETRICAL DATA



Luminous flux	Chromaticity coordinates	
All LEDs on 15000 lm	x 0.330	y 0.330

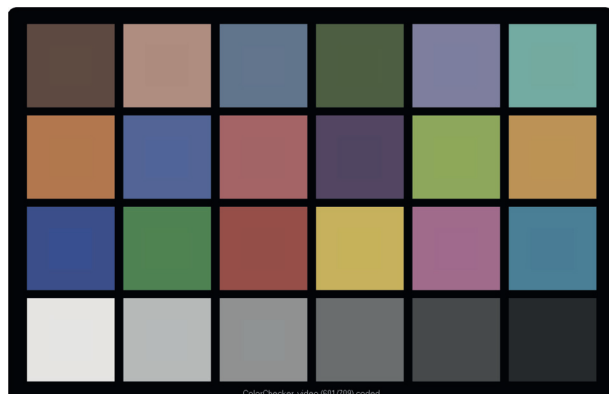


SPECIFICATIONS

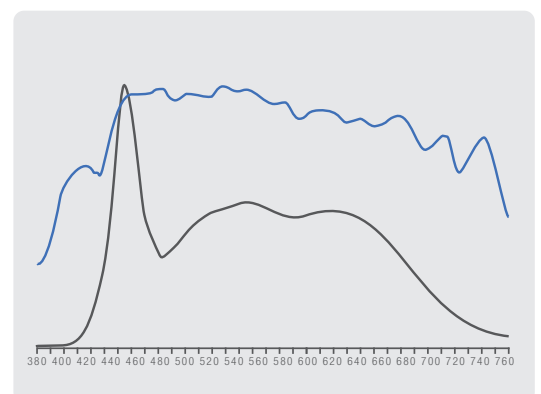
Product type	LED Fresnel Spotlight
Type	Theater Fresnel
Colour spectrum	Daylight
Number of LEDs	1
LED type	240 W (ca. 50,000 Operating Hours)
LED PWM Frequency	Adjustable: 800 Hz, 1200 Hz, 2000 Hz, 3600 Hz, 12000 Hz, 25000
Dispersion	Field Angle: 28 ° - 60 °, Beam Angle: 15 ° - 40 °
Lens	200 mm Fresnel
DMX input	5-Pol
DMX output	5-Pol
DMX mode	4-channel, 3-channel, 2-channel 2, 2-channel 1, 1-channel
DMX Functions	strobe, Dimmer Fine, Dimmer Curve, Dimmer, Device Settings
Standalone modes	Static, Master / Slave mode
Controls	Encoder
Indicators	OLED Display
Operating voltage	100 V AC - 240 V AC, 50 - 60 Hz
Power consumption	210 W
Power Factor	0.99 / 120 V, 0.94 / 240 V
Power connector	TRUE1 compatible Power I/O sockets
Housing material	die-cast aluminum
Cabinet colour	Black
Protection class IP	IP20
Cooling	Combination of heat pipe and temperature controlled fan
Luminous flux	15000 lm
Efficiency	63 lm/W
Colour temperature	5400 K
Operating Temperature	-15 - 45 °C
Dimensions including Mounting Bracket	
Width	357 mm
Height	573 mm
Length	322 mm
Weight	11,6 kg
Accessories (included)	Power cord, gel frame, 8-way barndoor

Television Lighting Consistency Index-2012

CCT = D5578 (-1.3)
TLCI-2012: 97 (D5578)



Sector	Lightness	Chroma	Hue
R	0	0	0
R/Y	0	0	-
Y	0	0	-
Y/G	0	0	0
G	0	0	0
G/C	0	0	0
C	0	0	+
C/B	0	0	-
B	0	-	-
B/M	0	0	0
M	0	0	0
M/R	0	0	0



Features and specifications subject to change without notice.

adamhall.com